



Capitol Center for the Arts
44 South Main Street
Concord, NH 03301
P: 603-225-1111 x 107 F: 603-224-3408
E:smartin@cconh.com
www.cconh.com

TECHNICAL SPECS

General Information-

The Chubb Theatre is a proscenium theatre and is the main performing space at the CCA.

SEATING CAPACITY-Total seating capacity: 1304

Orchestra Level Seating: 871

Mezzanine Level Seating: 113

Balcony Level Seating: 320

STAGE DIMENSIONS

Height:

Proscenium: 22' 0"

Adjustable by valance curtain trim.

Stage floor to auditorium floor: 3' 2"

Width:

Proscenium: 39' 7"

From Center Line to:

Stage Left (fly rail) 38' 0"

Stage Right: 39' 9"

Depth:

From Back Wall Column to:

Plaster Line: 24' 6"

Apron Edge @ center: 29' 0"

Edge of pit @ apron level: 36' 0"

WING SPACE

Stage Left: 18' 2 1/2"

Stage Right: 19' 11 1/2"

LOADING DOCK

Loading door opening: 5' 9 1/2" wide X 6' 11" high.

Loading dock is equipped with a hydraulic scissor lift.

Scissor Lift Specifications:

Width: 5'

Length: 9'

Lowered Height: 2' 4"

Raised Height: 8' 10" (Level with stage floor)

Weight Capacity: 4,000 pounds

Trucks may be left at the dock only if they do not interfere with other CCA activities. Parking will be directed by Director of Production and Facilities.

ELEVATOR

The elevator is located to at the back of the house and allows access to the Lobby.

Dimensions:

Door: 2' 11 3/4" wide X 7' high

Width: 5' 8"

Length: 4' 5"



Capitol Center for the Arts
44 South Main Street
Concord, NH 03301
P: 603-225-1111 x 107 F: 603-224-3408
E:smartin@ccanh.com
www.ccanh.com

TECHNICAL SPECS

PYROTECHNICS/OPEN FLAME

All equipment and scenery must be properly fireproofed according to NFPA 101 standards. The use of pyrotechnic devices or fireworks in a public building is strictly prohibited, absent the express written licenses as required by the State of New Hampshire.

The Capitol Center for the Arts is a smoke-free environment and no smoking is permitted anywhere in CCA buildings.

FLY SYSTEM

Single Purchase Counterweight System

Fly Rail is located Stage Left, at Stage Level

Linesets: 31

Arbor Capacity: 1000 pounds

Batten Length: 45'

Low Trim: 4' 6"

High Trim: 62' 0"

Available Weight: 18,000 pounds

SOFT GOODS

Legs, black velour (3 pairs) = 15'W x 30'H (2nd, 3rd, and 4th legs on our lineset schedule)

(1 Pair) = 8'W x 30'H (1st legs on our lineset schedule)

Borders, black velour (3) = 45'W x 10'H

Travelers, black velour (2) = 45'W x 30'H

Cyclorama, white, seamless (1) = 45'W x 30'H

Black Scrim (1) = 45'W x 30'H

NOTE: All sort goods are sewn flat, no fullness.

DRESSING ROOMS/WARDROBE

The following contain permanent hanging racks, lighted makeup mirrors, shower and toilet facilities:

(2) STAR 1-2 person with private shower and toilet – located stage level, off SR

(5) 2-4 person rooms – located one floor above stage level, off SR

(1) 15-20 person room – located one floor below stage level, off SR

(1) washer and (1) dryer are located in the large dressing room, one floor below stage level

(7) rolling wardrobe racks



Capitol Center for the Arts
 44 South Main Street
 Concord, NH 03301
 P: 603-225-1111 x 107 F: 603-224-3408
 E:smartin@ccanh.com
 www.ccanh.com

TECHNICAL SPECS

MISCELLANEOUS EQUIPMENT

Ladders: All ladders are fiberglass and aluminum, Type I.

- (1) 20' A-Frame with Extension
- (2) 8' step ladder
- (1) 10' step ladder
- (1) 12' step ladder

Tables:

- (12) 8' x 2' 6"
- (9) 6' x 2' 6"
- (29) 5' diameter round
- (12) 4' diameter round

- (1) 30' Genie Lift
- (1) Truck Ramp

FRONT OF HOUSE

FOH Pipe: (approx. 70' throw)
 65' From plaster line
 30' above stage level
 (24) circuits #1-24

Box Booms: (approx. 62' throw)
 (6) circuits per boom
 House Left Boom #37-42
 House Right Boom #43-48

Box Boom Placement:
 45' from plaster line
 15' to 29' above stage level
 30' off center line

Balcony Rail: (approx. 55' throw)

We have three 10'7" pipes (house left, Center, and right) that comprise the balcony rail position.

The positions House Left and House Right each have 4 circuits (two of which are usually reserved for house-sponsor gobos). The center position has no circuits; cables must be run from left or right.

STAGE ELECTRICS

All electrics have removable drop boxes attached SL.

First: Lineset #5
 2' 6" from plaster line
 (18) circuits

Second: Lineset #12
 8' 0" from plaster line
 (18) circuits

Third: Lineset #22
 15' 0" from plaster line
 (18) circuits #121-138

Forth: Lineset #26
 18' 6" from plaster line
 (12) circuits #121-138

ON-STAGE BOOM DROP BOXES

- SL:** (DS-US)
 1 #139-144
 2 #145-150
 3 #151-156
 4 #157-162
SR: (DS-US)
 1 #163-168
 2 #169-174
 3 #175-180
 4 #181-186

WALL POCKETS

- DSL:**
 (4) circuits #187-190
DSR:
 (4) circuits #191-194
USL:
 (6) circuits #165-200

Additional Circuits Onstage

In addition to our rep. hang we have 2 (6-circuit) drop boxes.
 Both are attached SL; One reaches electrics DS-MS, the other MS-US.



Capitol Center for the Arts
44 South Main Street
Concord, NH 03301
P: 603-225-1111 x 107 F: 603-224-3408
E:smartin@ccanh.com
www.ccanh.com

TECHNICAL SPECS

CONTROL

- (96) ETC Source Four Dimmers, 2.4kw
- (1) ETC 48/96 Express Board

FOLLOWSPOT BOOTH (approx. 95' throw)

- Equipped with (2) Lycian SuperArc Spotlights
- 90' from plaster line
- 30' above stage level

COMPANY POWER

- (1) Panel "A" Down Stage Left
 - 3 phase 600 amp
- (1) Panel "B" Down Stage Left
 - 3 phase 200 amp per leg
- (1) Panel "C" Down Stage Right
 - 3 phase 100 amp per leg
- (1) Panel "D" Loading Dock
 - 3 phase 100 amp per leg

ROAD TRANSFER

All house circuits (60 FOH, 140 Stage)
terminate down stage left with male 2p&g
stage-pin connectors.

LIGHTING INSTRUMENTS / EQUIPMENT

- (56) ETC Source Four Par
- (22) ETC Source Four 36 Degree
- (22) ETC Source Four 26 Degree
- (14) ETC Source Four 19 Degree
 - (typically 2 are reserved for sponsor gobos)
- (20) ETC Source Four 10 Degree
- (2) ETC Source Four 15-30 Degree Zooms
- (6) (Barrels Only) ETC Source Four 50 Degree
- (6) Altman 3-Cell Cyc Lights
- (49) Two-fers
- (6) Booms (10' tall) with 50 lb. Base
- (8) Double Side Arms
 - (6 are used in our rep plot for our box booms)
- (22) Single Side Arms
- Pattern Holders:
 - (34) "B" Size
 - (6) "A" Size
- (6) Irises
- (1) Water based Radiance Hazer
 - (LeMaitre Special effects Inc. – Model # CLF-2460)

FRONT PROJECTION

The distance from our Plaster line to our usual projector position (FOH next to sound and lights) is 48'.



Capitol Center for the Arts
44 South Main Street
Concord, NH 03301
P: 603-225-1111 x 107 F: 603-224-3408
E:smartin@ccanh.com
www.ccanh.com

TECHNICAL SPECS

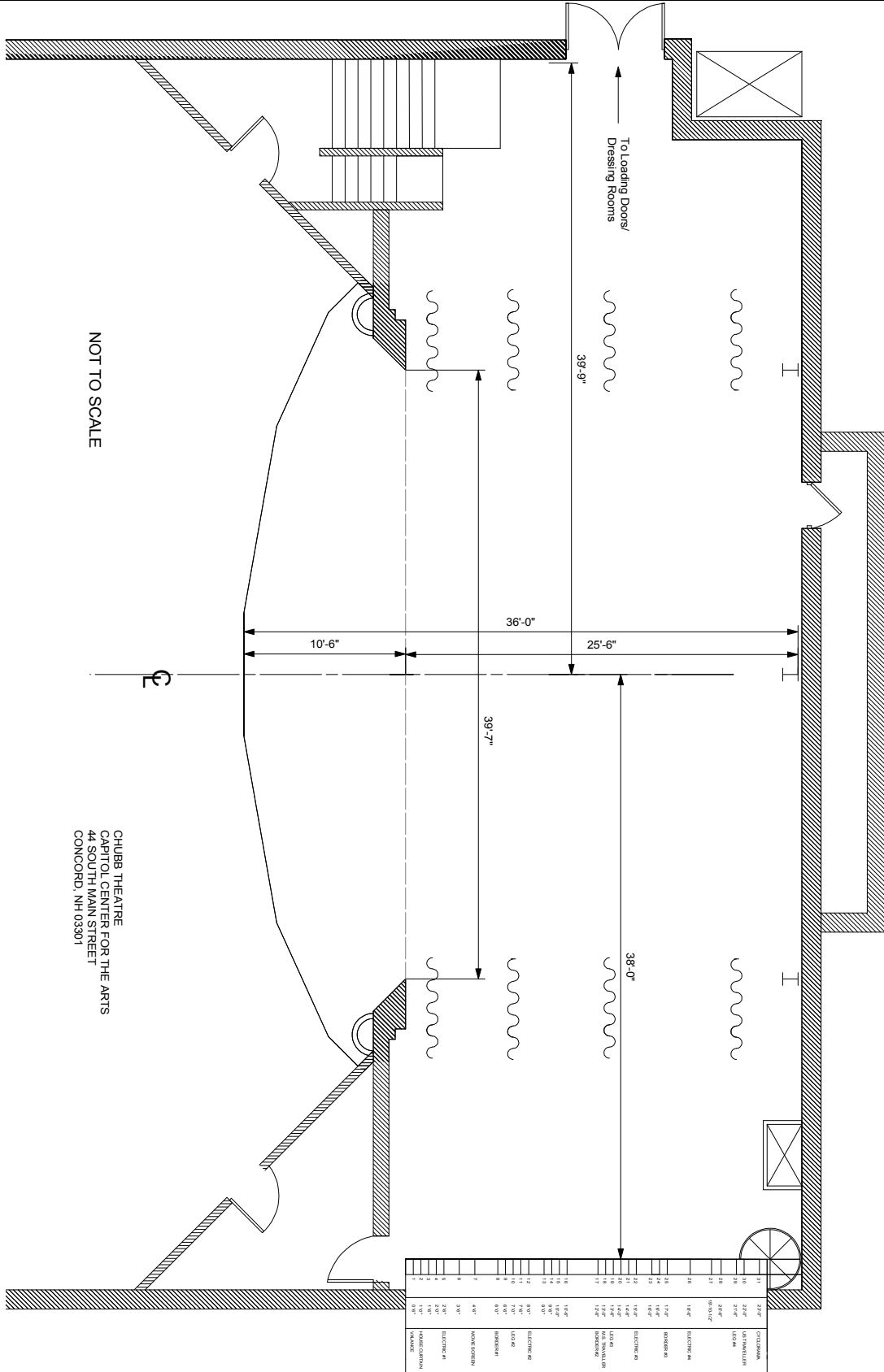
SOUND EQUIPMENT

- (1) Meyer Galileo Processor
 - (12) Meyer M2D – 6 per side stage – hanging stacks
 - (2) Meyer M3D subs – Stacked center under the apron
 - (4) Meyer M1D front fills
 - (4) EAW SM129Z Monitor Speakers
 - (1) Midas Venice 32 ch. Mixing Console
 - (3) QSC Mx 1500A Amplifiers for Monitors
 - (2) Klark-Teknik DN360 Graphic EQ
 - (1) DBX 1231 Graphic EQ
 - (2) DBX 166XL Compressor/Limiter/Gate
 - (1) DBX 1046 Quad Compressor/Limiter
 - (1) T.C. Electronic Triple + C Digital Compressor
 - (1) T.C. Electronic M-One Effects Processor
 - (1) Tascam CD-X1700 (dual CD)
 - (1) Tascam CD-RW 900SL Pro CD-R Recorder
 - (1) Denon Dual Cassette Deck
 - (2) Ultra DI – Behringer Active Direct Inject Box Model DI200
 - (1) 24/4 FOH snake
 - (1) Rapco 16/4 channel snake
 - (1) Rapco 8-channel snake
 - (6) Shure SM58 Mics
 - (6) Shure SM57 Mics
 - (3) Crown PCC-160 Mics
 - (2) Shure Wireless Hand-held ULXS4 Mics
 - (2) Shure Wireless ULXS4 Lavs
 - (4) Shure ULXS4 wireless receivers
 - (1) SM87A
 - (1) Shure Beta 87A
 - (1) SM77
 - (2) MXL 603S Mogami Mics
 - (4) MXL 2001 Gold Diaphragm / Uni-directional Condenser mics
 - (2) Shure RS25 (has on/off switch)
 - (1) Shure Drum Mic Kit Includes:
 - (1) PG52
 - (3) PG56
 - (2) PG81
-



Capitol Center for the Arts
 44 South Main Street
 Concord, NH 03301
 P: 603-225-1111 x 107 F: 603-224-3408
 E: smartin@ccanh.com
 www.ccanh.com

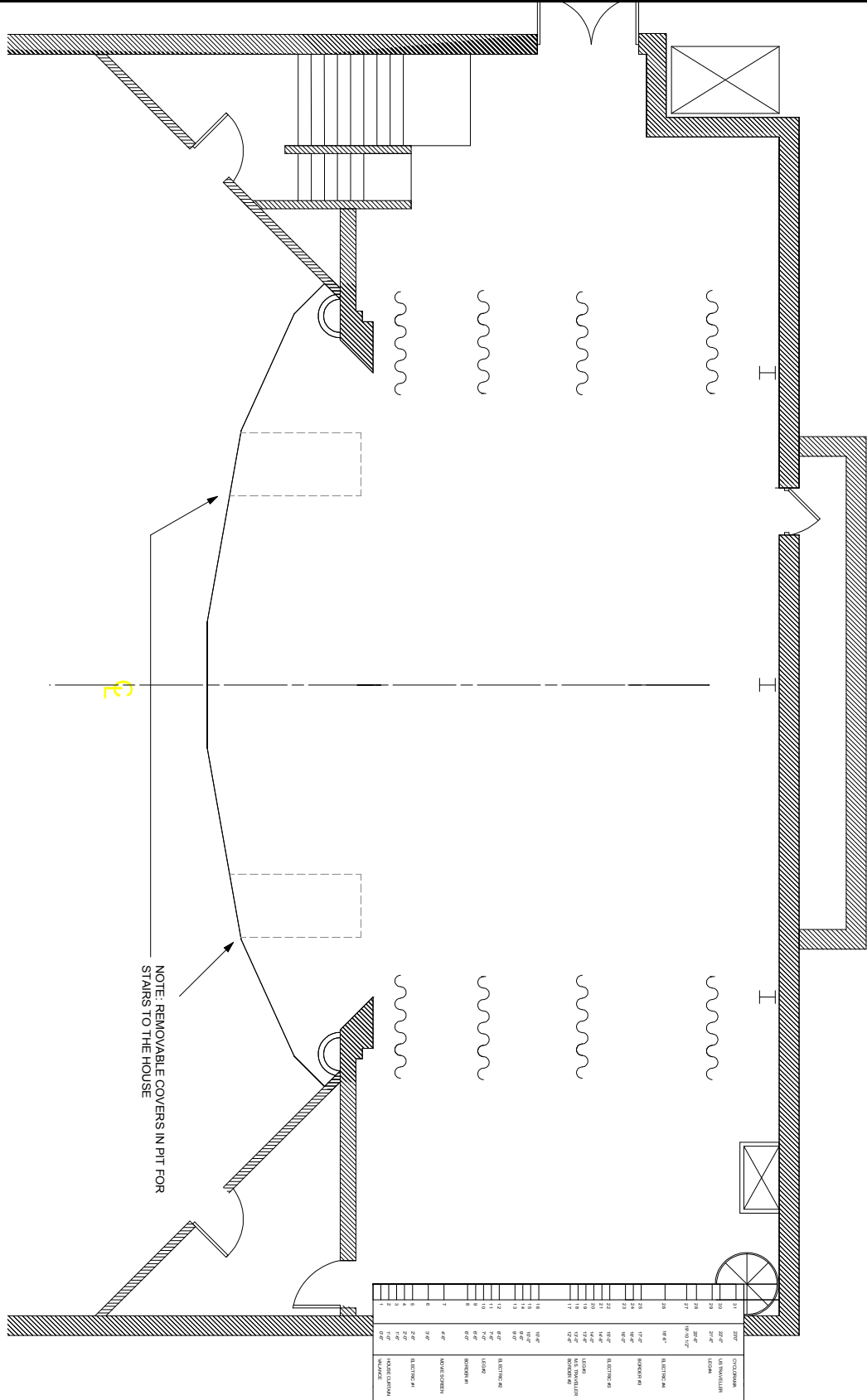
CHUBB THEATRE GROUND PLAN DIMENSIONS





Capitol Center for the Arts
 44 South Main Street
 Concord, NH 03301
 P: 603-225-1111 x 107 F: 603-224-3408
 E: smartin@ccanh.com
 www.ccanh.com

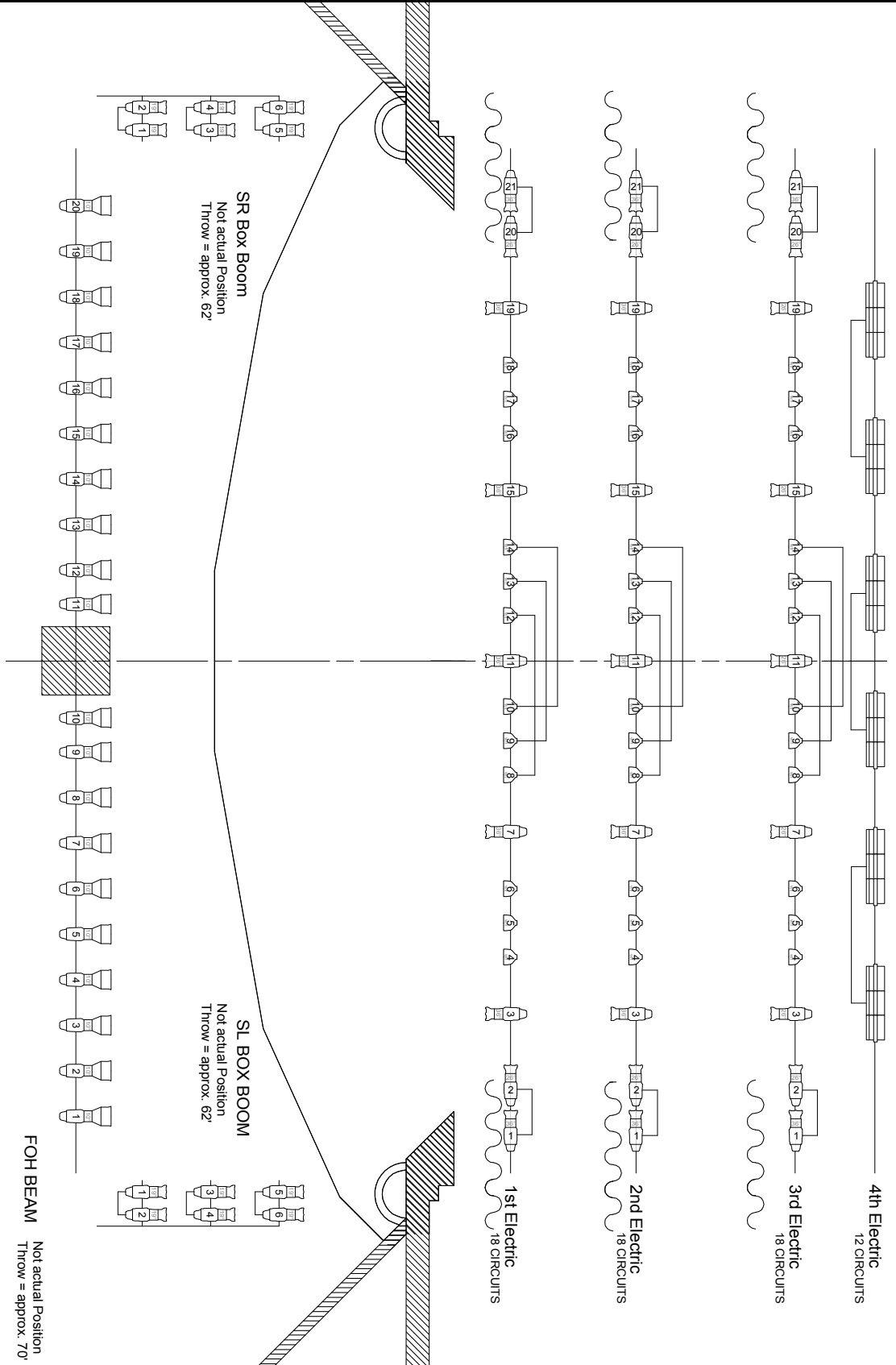
CHUBB THEATRE GROUND PLAN WITH STAIRS





Capitol Center for the Arts
44 South Main Street
Concord, NH 03301
P: 603-225-1111 x 107 F: 603-224-3408
E: smartin@ccanh.com
www.ccanh.com

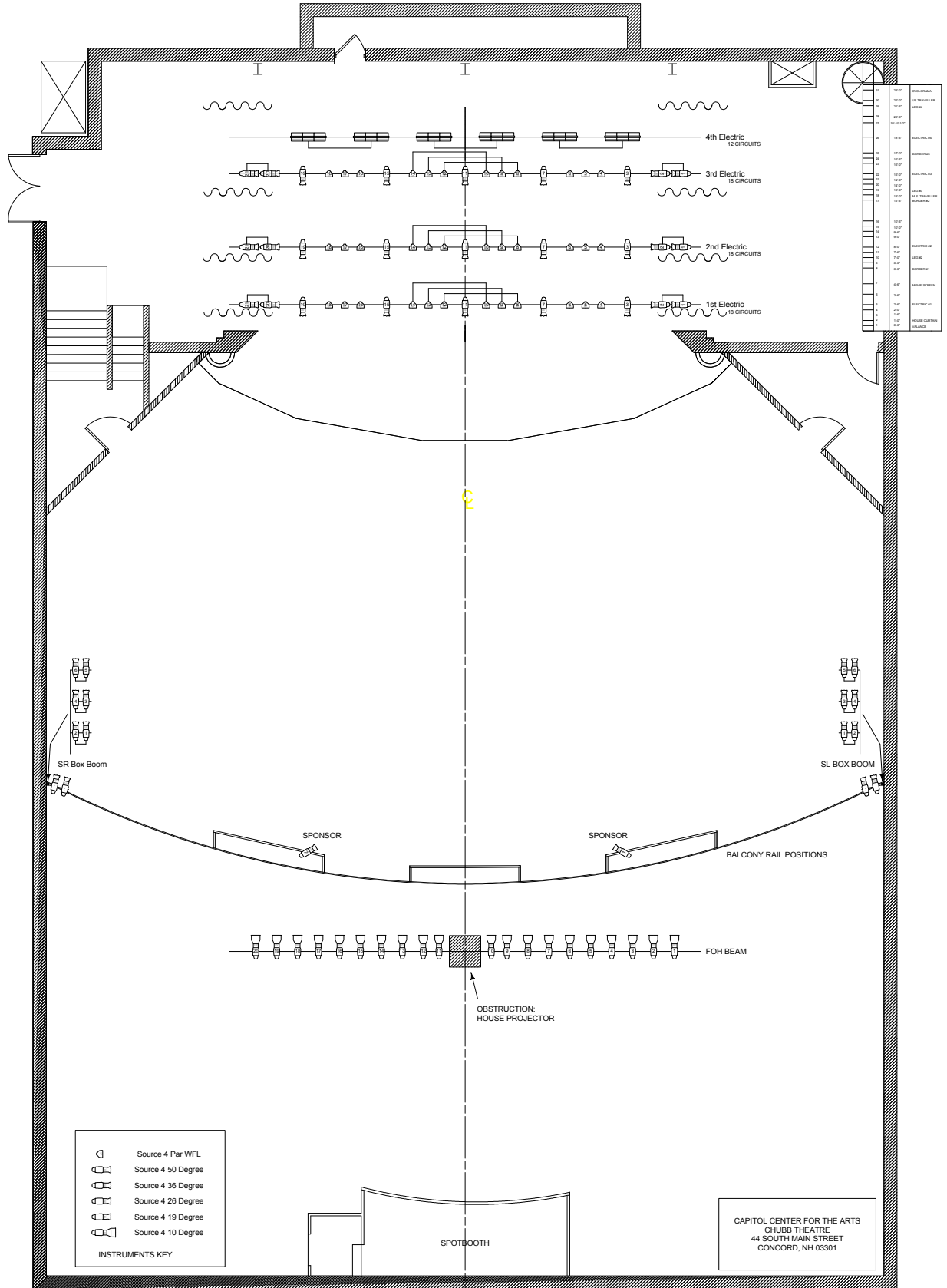
REP PLOT





Capitol Center for the Arts
 44 South Main Street
 Concord, NH 03301
 P: 603-225-1111 x 107 F: 603-224-3408
 E: smartin@ccanh.com
 www.ccanh.com

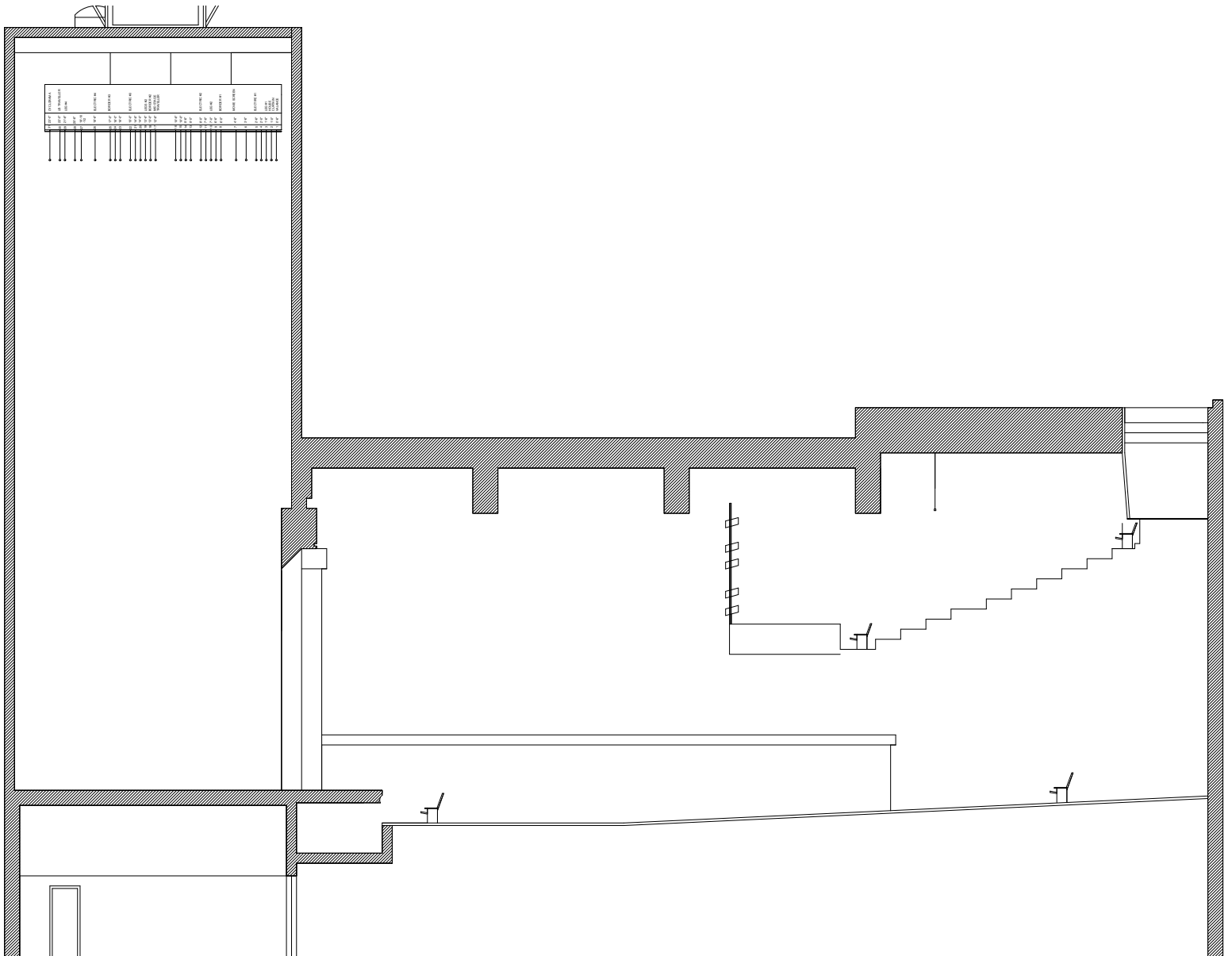
REP PLOT - FULL THEATRE





Capitol Center for the Arts
44 South Main Street
Concord, NH 03301
P: 603-225-1111 x 107 F: 603-224-3408
E: smartin@ccanh.com
www.ccanh.com

CHUBB THEATRE SECTION





Capitol Center for the Arts
 44 South Main Street
 Concord, NH 03301
 P: 603-225-1111 x 107 F: 603-224-3408
 E:smartin@ccanh.com
 www.ccanh.com

LINESSET SCHEDULE

Line #	Distance US of Plaster Line	House Hang	Tour Hang	Weight
	0'-6"	** Valance		
2	1'-0"	** House Main/Fire Curtain		
3	1'-6"	1st Legs		
4	2'-0"			
5	2'-6"	1st Electric		
6	3'-6"			
7	4'-6"	** Movie Screen		
8	6'-0"	1st Border		
9	6'-6"	2nd Legs		
10	7'-0"			
11	7'-6"			
12	8'-0"	2nd Electric		
13	9'-0"			
14	9'-6"			
15	10'-0"			
16	10'-6"			
17	12'-6"	2nd Border		
18	13'-0"	** Mid Stage Traveller		
19	13'-6"	3rd Legs		
20	14'-0"			
21	14'-6"			
22	15'-0"	3rd Electric		
23	16'-0"			
24	16'-6"			
25	17'-0"	3rd Border		
26	18'-6"	4th Electric		
27	19'-10 1/2 "			
28	20'-6"			
29	21'-6"	4th Legs		
30	22'-0"	** Up Stage Traveller		
31	23'-0"	Cyclorama		

** cannot be stripped!



Capitol Center for the Arts
44 South Main Street
Concord, NH 03301
P: 603-225-1111 x 107 F: 603-224-3408
E:smartin@ccanh.com
www.ccanh.com

LOCAL INFORMATION

Hotels—Tell them you are performing at the CCA for the best rate!

The Centennial Inn—\$\$\$—restaurant—limited hours of operation

96 Pleasant Street, Concord, NH 03301 ~ (603) 225-7102

Concord Comfort Inn—\$—free deluxe continental breakfast—no restaurant

71 Hall Street, Concord, NH 03301 ~ (603) 226-4100

Concord Courtyard by Marriott—\$\$—full service hotel—shuttle van service

70 Constitution Avenue, Concord, NH 03301 ~ (603) 225-0303

Hampton Inn—\$\$—complimentary breakfast—no restaurant

515 South Street, Bow, New Hampshire 03304 ~ (603) 224-5322

Holiday Inn—\$\$—full service hotel

172 North Main Street, Concord, NH 03301 ~ (603) 224-9534

Emergency Medical Assistance

Concord Hospital

250 Pleasant Street, Concord, NH 03301 ~ (603) 225-2711

Orthopedic Surgeons

Concord Orthopaedics, PA

264 Pleasant Street, Concord, NH 03301 ~ (603) 224-3368

Pharmacies

Brooks Pharmacy

165 North State Street, Concord, NH 03301 ~ (603) 223-6718

CVS Pharmacy

44 North Main Street #52, Concord, NH 03301 ~ (603) 225-9300

Rite Aid Pharmacy

92 South Street, Concord, NH 03301 ~ (603) 228-8400

Health Club

YMCA (day passes available for \$10/day)

15 North State Street, Concord, NH 03301 ~ (603) 228-9622

Taxi Services

Concord Cab Co

1 Kennedy Street, Concord, NH 03301 ~ (603) 225-4222

Main Street Taxi

44 North Main Street, Concord, NH 03301 ~ (603) 226-8888



Capitol Center for the Arts
44 South Main Street
Concord, NH 03301
P: 603-225-1111 x 107 F: 603-224-3408
E: smartin@ccanh.com
www.ccanh.com

DIRECTIONS

From points south:

* Take 93 North to Exit 13 (Manchester Street exit:). Take a left at the bottom of the ramp. Continue straight as Manchester Street changes to South Main Street. Proceed approximately one mile to CCA on left, between Concord Street and Thompson Street.

From points north:

* Take 93 South to Exit 13 (Manchester Street exit). Take a right at the bottom of the ramp. Continue straight as Manchester Street changes to South Main Street. Proceed approximately one mile to CCA on left, between Concord Street and Thompson Street.

From points west:

* Take 89 South to the Concord exit, onto 93 North and follow directions from "points south" (above).

From points east:

* Take Route 4 West onto I-393 toward Concord. Take 93 South to Exit 13 and follow directions from "points north" (above).

PLEASE NOTE:

It is often easier for buses and large trucks to take a left from South Main Street onto Thompson Street, then another left onto South State Street (circling the block) and then another left onto Concord Street. The loading dock will be located almost immediately on the left.

